

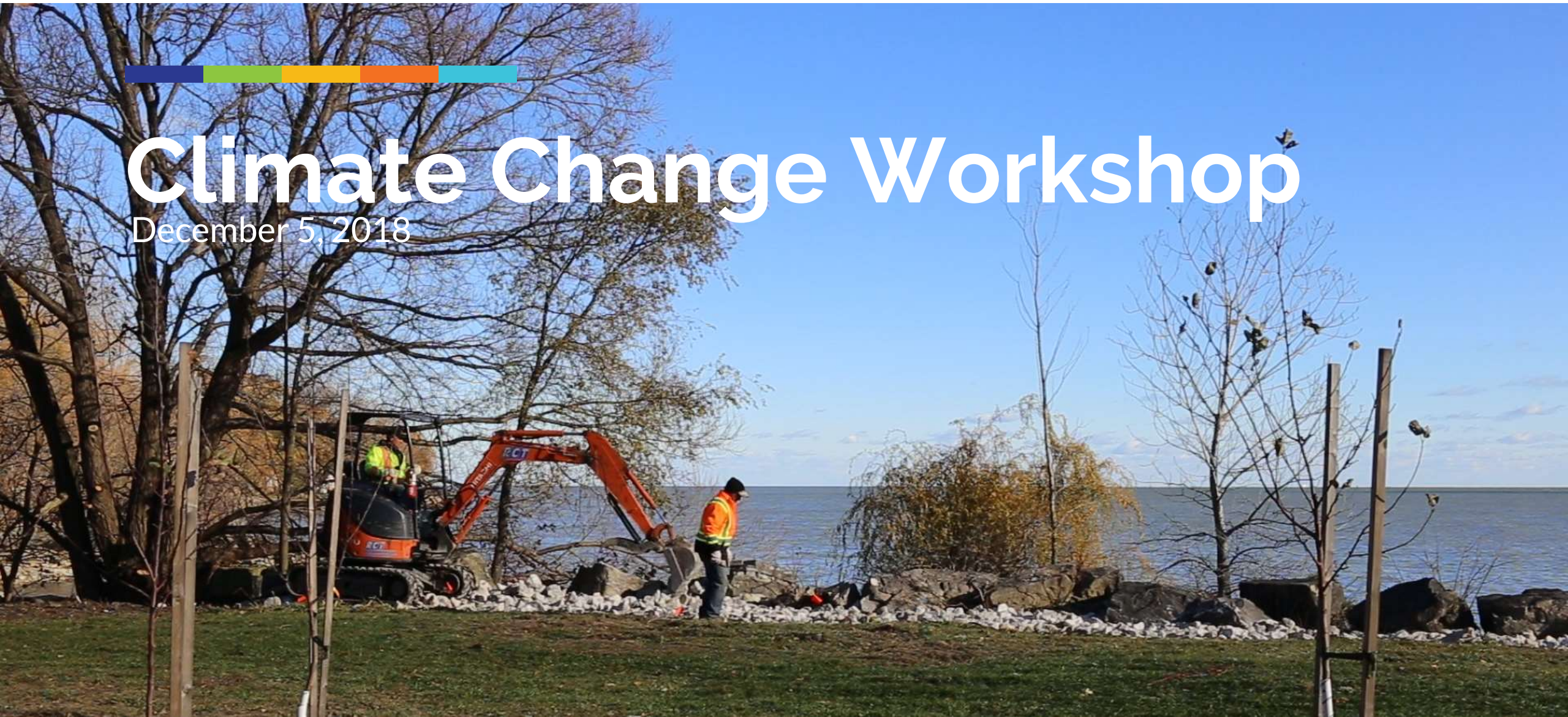


Essex Region Conservation
the *place* for life



Climate Change Workshop

December 5, 2018



**“Climate change has
already begun and it is
severe, pervasive, and
irreversible”.**

Intergovernmental Panel on Climate Change - IPCC, 2014

Warmer. Wetter. Wilder.

- **Warmer.** Heat waves and droughts. Altered species ranges, stresses forest and wetlands. Invasive species. Biodiversity loss and habitat alteration. Reduced ice cover reduces shoreline protection. Ice jams and flooding.
- **Wetter.** Increased rain events during winter and early spring (instead of snow).
- **Wilder.** More extreme events. More intense and severe storms. Tornados and high winds. Rain events overwhelm infrastructure. Increased erosion. Degraded water quality. Fluctuating water levels.

The climate will continue to change.

2016-2025 STRATEGIC PLAN: SUSTAINING THE PLACE FOR LIFE

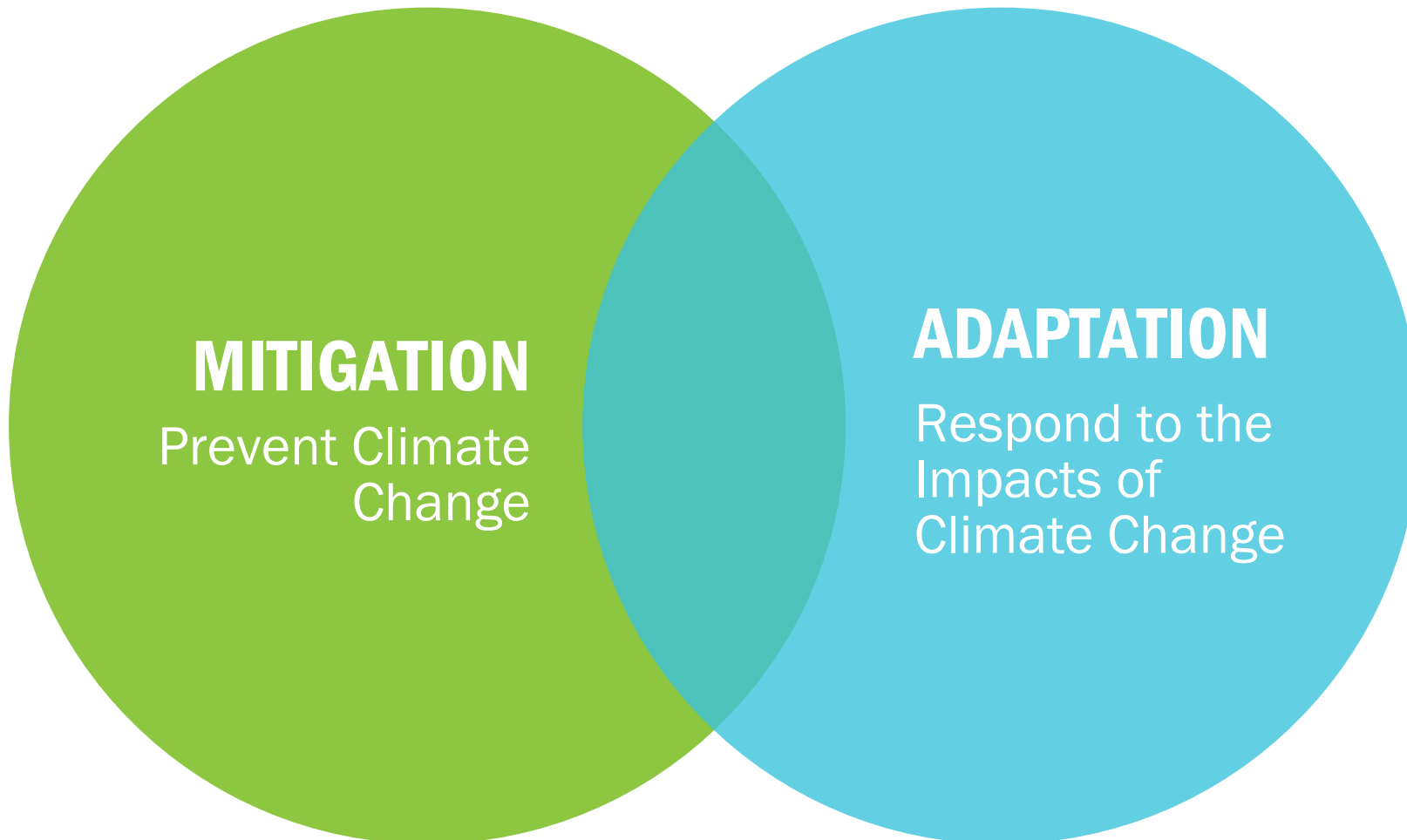
While efforts to slow climate change must continue, we also need to help our partner communities prepare to adapt to its impacts. Adaptation will be necessary to build a resilient community and sustainable planning plays a vital role in creating resiliency.

The climate will continue to change.

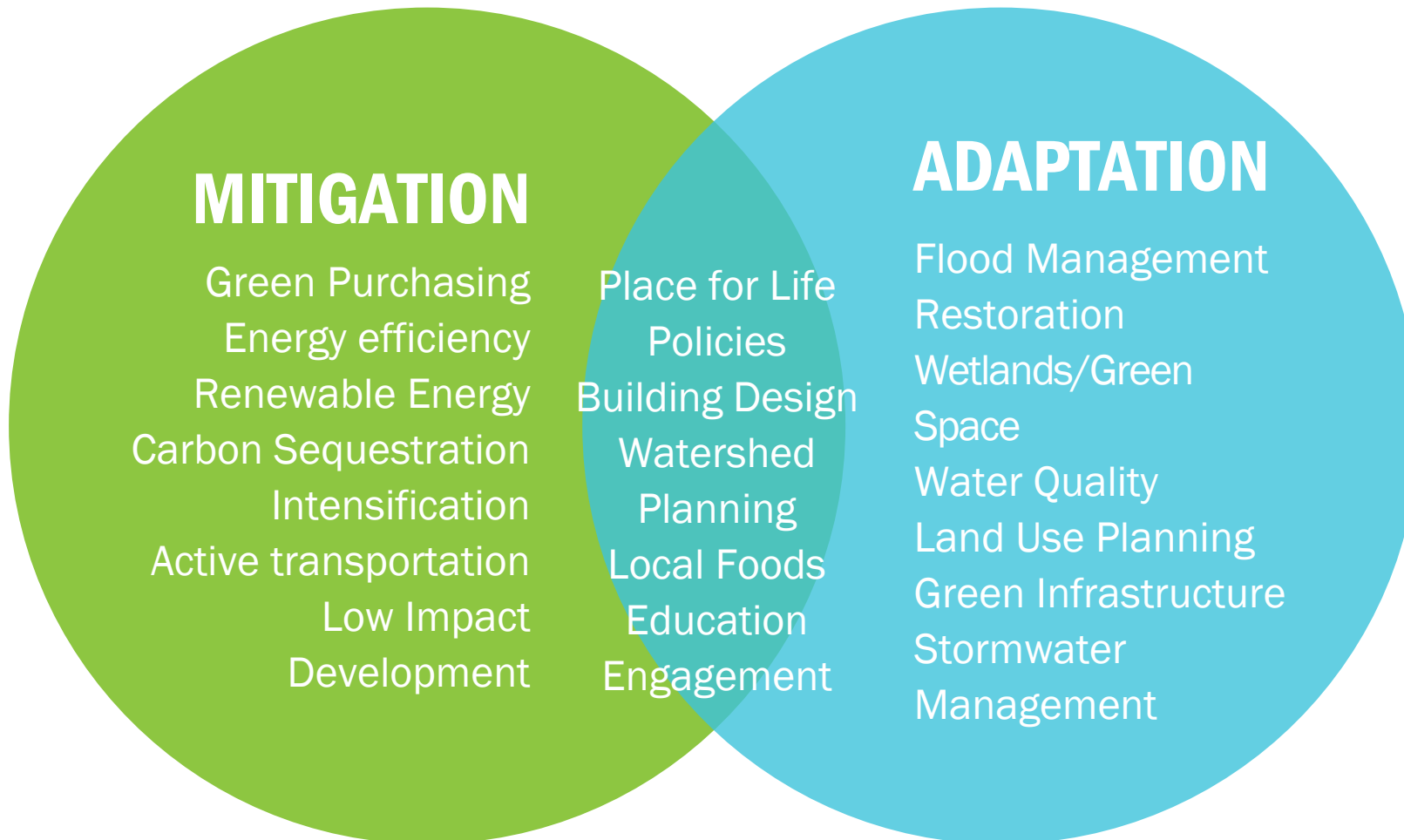
THE PLACE FOR LIFE POLICIES (*draft*)

To build on our experience in flood risk management, watershed planning, biodiversity and natural heritage, and water quality to develop a regional Climate Change Adaptation and Mitigation Strategy with key stakeholders and other partners to increase the resiliency of our watersheds and our communities in response to changing climates and landscapes.

Mitigation and Adaption.



Mitigation and Adaption.



Developing the Plan.



“Climate adaptation is necessary to manage the unavoidable and climate mitigation is necessary to avoid the unmanageable.”.